

SosenDmxProgrammer Quick Guide V1.1

1. Programmer connects with LED driver

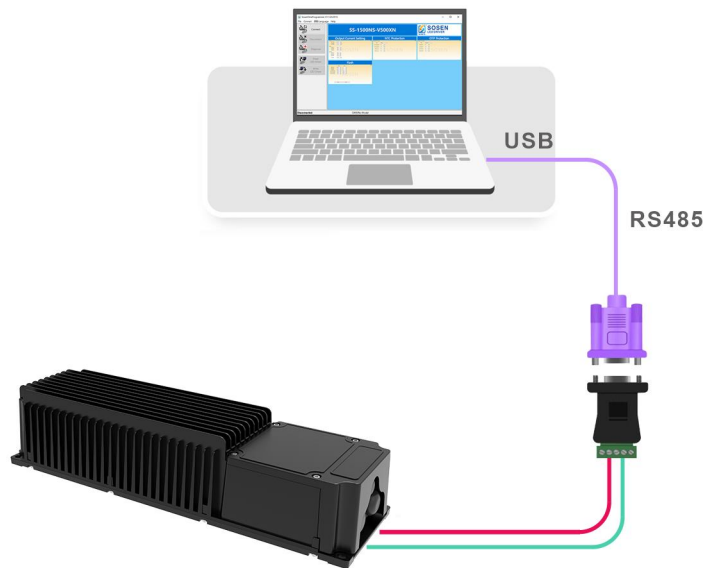


figure 1

The color of the dimming light may be changed. It is best to distinguish the line sequence according to the label of RS485 and the LED driver.

"RS485 : A line" is connected to **"LED driver: D+"** .

"RS485 : B line" is connected to **"LED driver: D-"** .

Please confirm that the above steps are correct, and then perform the following operations.

2. Online programming

Online programming operation method: **Open "SosenDmxProgrammer" ->**

Connect -> Read LED Driver / Load Default Values -> modify data ->**Write LED Driver**

(1) Connect, Read LED Driver and Write LED Driver, as shown in Figure 3, at position ② in the block diagram.

When connecting, please confirm whether the port number is correct (the correct one is "USB Serial Port (COM x)"), if the USB Serial Port (COM x) does not appear, please install the USB driver first, as shown in Figure 2.

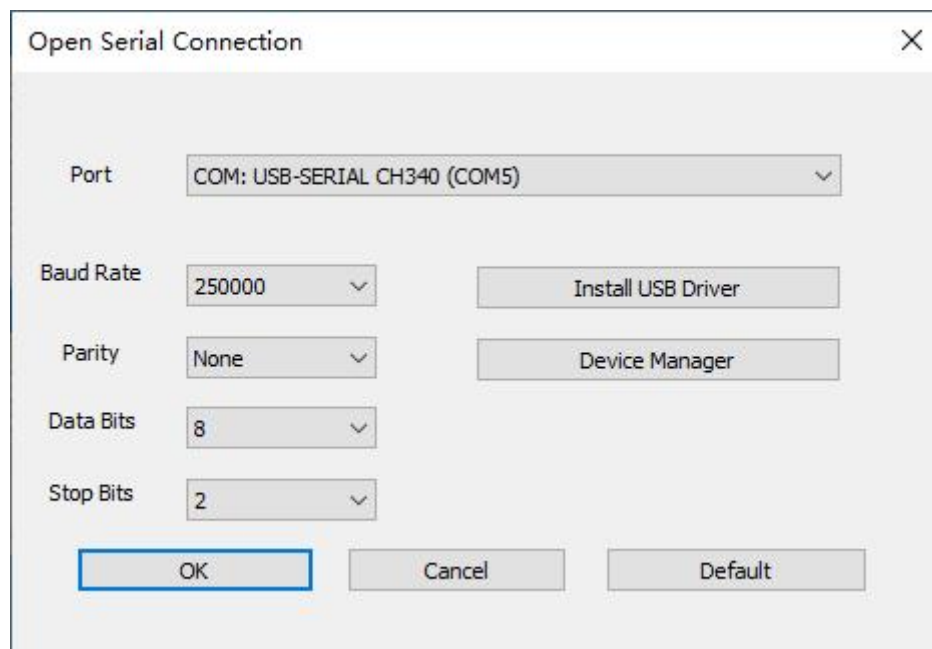


figure 2

If you want to restore the default parameters of the model, you can click "Load Default Values", as shown in Figure 3, click the position ③ of the block diagram with the left mouse button, and select the corresponding model.

(2) Modify the data, such as "Work Current Setting", "3in1 Dimming", "Timer Dimming", etc., as shown in Figure 3, at position ④ in the block diagram.

(3) When "Writing LED Driver", please make sure that the selected model is the same

as the connected LED driver model (as shown in Figure 3, position ⑤ in the block diagram), otherwise Programmer will refuse to program and report an error.

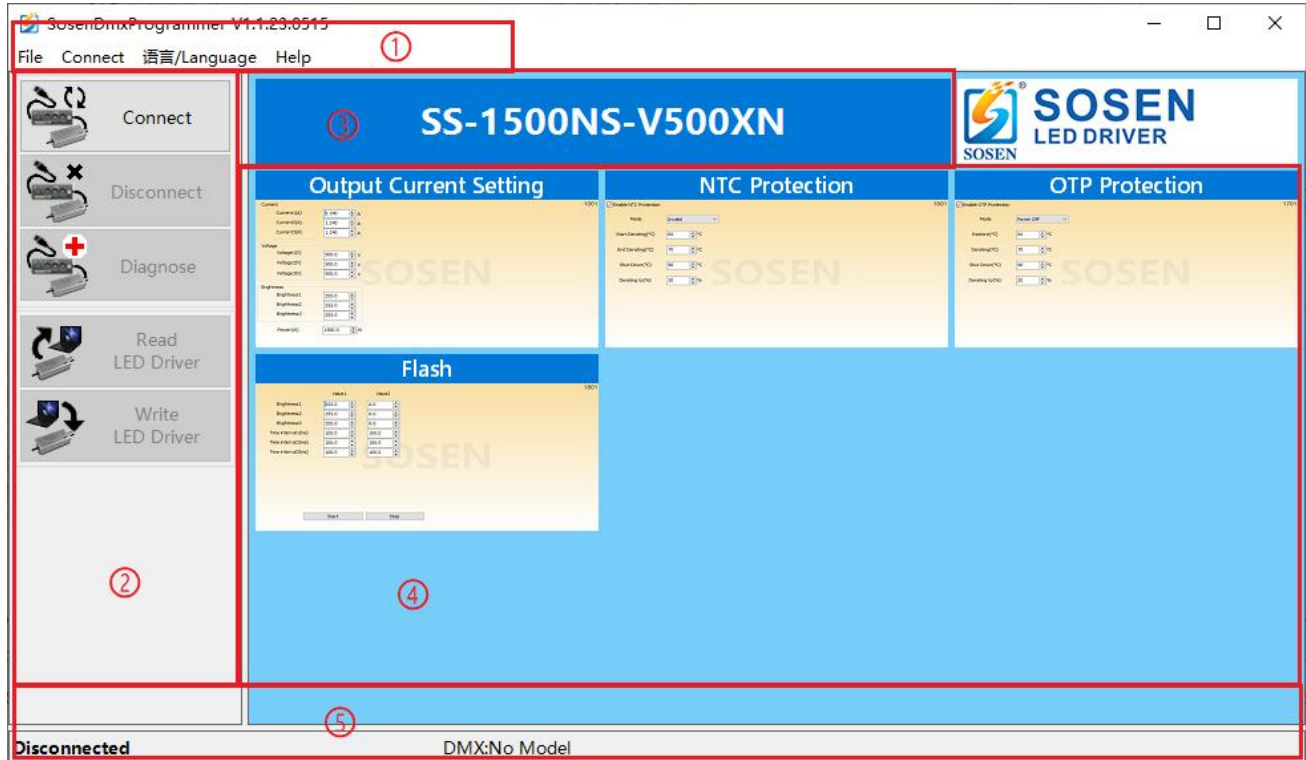


figure 3

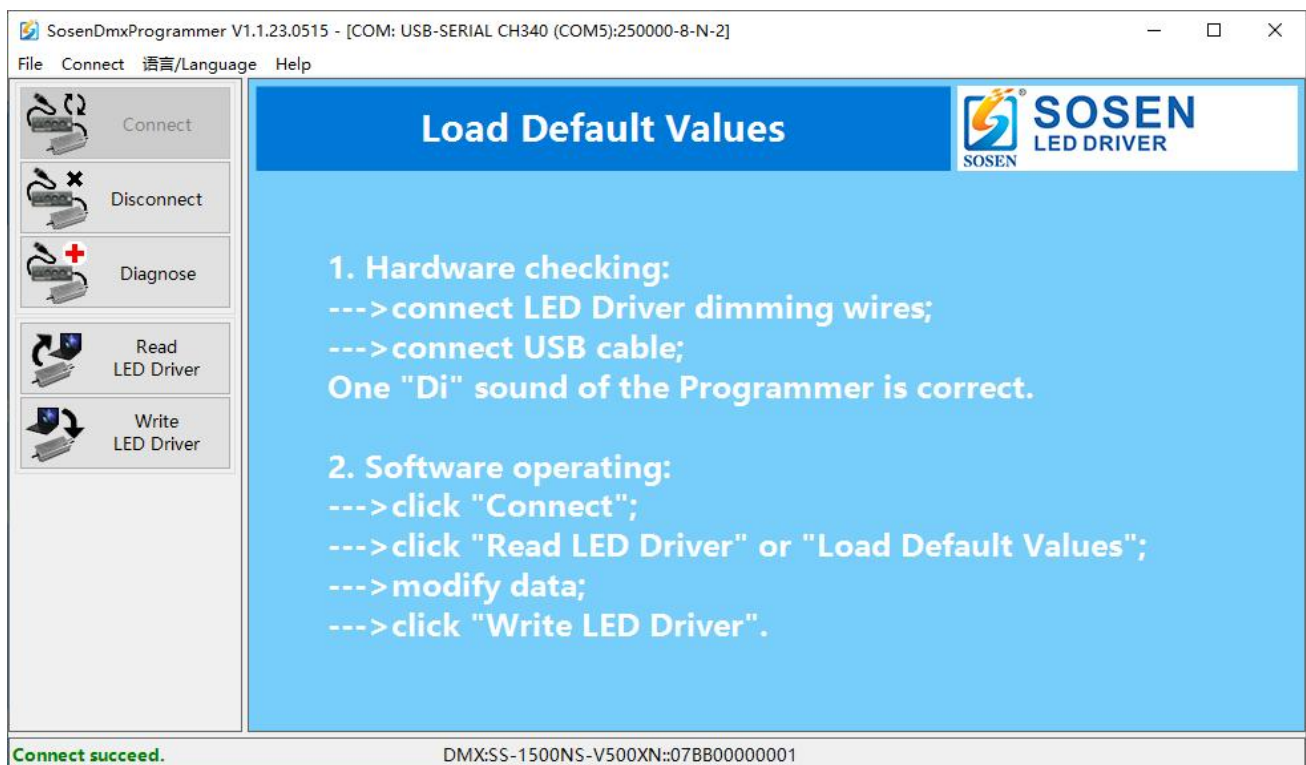
3. Connect the Programmer with the LED driver

Connect the RS485 to the USB port of the computer, click the "Connect" button of the software, and display "Reader connect succeed.", indicating that the reader connection is successful.



Shenzhen SOSEN Electronics Co.,Ltd.

A3 Building, Gonghe 4th Industrial Area, Shajing Street, Bao'an District, Shenzhen,
China 518104



Click the software "Read LED Driver" button, and display "Read DMX succeed.",
indicating that the LED driver reading is successful.

